



ACCESSORIES & SPARES

4 Inch HD Radiator Cone (Part #175500) ►

Larger Cone accessory for HD, Diesel, & Marine Engines.
For use with the HECAT® ENGINE COOLING PULSATOR®
(2 inch cone is not included - shown as "how to use").



8 Ft. Flush & Return Extension Hose Set (Part #111739)

For aircraft, truck, bus, and heavy equipment applications.
For use with FAC-400, FAC-200, MARK IV or MARK II model flushers.
Doubles the length of the standard equipment Flush & Return line sets.
NOT for use with H1000 flusher (different quick couplers, call as needed).



1/4" T-Strainer (Part #111731A) ►

For FAC-400, FAC-200, MARK IV or MARK II model flushers.
NOTE: Clear bowl is not available separately.



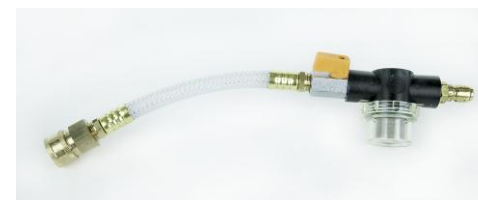
Return Hose Assembly (Part #111733)

For use with FAC-400 or MARK IV model flusher.
Includes T-Strainer, Clear bowl is not available separately.



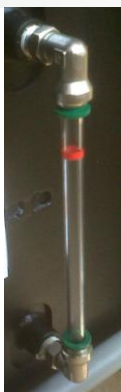
3/8" T-Strainer Assembly for H1000 (Part #410001) ►

NOTE: Clear bowl is not available separately.



Sight Tube Repair Kit (Part #117655)

For H1000, FAC-400, or MARK IV model flusher.
Includes 2 fittings & 2 lengths of Poly tubing.



Air filter Assembly (Part #118508) ►

For use with FAC-200 and MARK II model flushers.
Add on feature for older model flusher not equipped.



Spin-On Filter (Part #400022)

For use with the H1000, FAC-400 and MARK IV model flushers.
2 filters are included in each case of SAFE-FLUSH®.
Required (spec) filter for the H1000 Refrigerant flusher.

10 Inch Wheel Kit (Part #230016) ►

10 inch dia. rib tread (qty 2), 1/2 inch hub bore, 1 1/2 inch hub length.
Cotter Pins and 1/2 inch Spacers (if needed) included.

